

Self-Paced Workshop: Beginner's GIS I

Overview

This course covers fundamental GIS concepts as well as how to query a GIS database, manipulate tabular data, edit spatial and attribute data, and present data clearly and efficiently using maps and charts.

Participants will learn how to use ArcGIS 9.2 including: ArcMap™, ArcCatalog™, and ArcToolbox™ and explore how these applications work together to provide a complete GIS solution.

This self-paced course is for those who are new to ArcGIS and new GIS in general. This course will introduce basics of GIS followed by hands-on experience working with address matching/geocoding.

Self-Paced Workshop

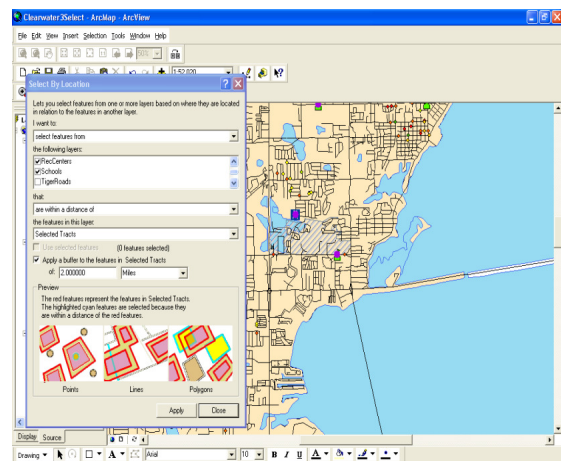
This is a **self-paced** course, therefore the student is responsible for taking full advantage of the materials they will be sent (CD of data and PDF of Workbook). If a Certificate of Completion is desired, the student will be required to submit *.jpgs of certain exercises in a timely manner to our staff as proof of progress. Knowledgeable assistance is available via email (fbradley@mail.usf.edu) or phone (727) 873-4863 (Fred Bradley). There is no lecture for this workshop and no meetings; everything is on your own using the materials provided.

Prerequisites and Recommendations

Participants should know how to use MS Windows software. This course provides the fundamental ArcGIS knowledge and experience needed to enroll in *Intermediate GIS workshop*.

Goals

- Display feature and tabular data
- Work with georeferenced spatial data
- Query features using logical expressions
- Find features using spatial relationships
- Edit spatial and attribute data
- Associate tables with joins and relates



Topics Covered

- Getting Started with ArcGIS Desktop v.9
 - Introduction to ArcMap, ArcToolbox, ArcCatalog.
 - Manipulating Display Parameters in ArcMap
- Analyzing Spatial Data
 - Querying Data in ArcMap.
 - Preparing Data for Analysis.
- Map Making and Printing Maps Using ArcGIS
 - Map Making with Template
 - Map Making without Template and Printing Maps
- Geocoding
 - How to create an Address Locator Service.
 - How to Match Addresses.
 - How to Rematch Unmatched Addresses.
- Add x,y data points and GPS points

<i>What Is Unique About Self-Paced Workshops?</i>	
Instructor-Led Workshop	Self-Paced Workshop
On 9am-4pm schedule	On your schedule
On-site (USF St. Petersburg)	At your location of choice
Instructor available in class	Assistance available via email/phone
Certificate of Completion at end of course	Certificate of Completion at end of course upon submission of *.jpgs
Use lab computers with software and data pre-installed	Install data on your computer and 180-day trial version of ArcGIS (with extensions)

Contact Us

Dr. Barnali Dixon / Julie Earls
 College of Arts and Sciences
 140 7th Ave. South
 (Geo-Spatial Analytics Lab -PNM 103)
 University of South Florida St. Petersburg
 St. Petersburg, FL 33701
 Phone (727) 873-4025
 E-mail: [Barnali Dixon](mailto:bdixon@stpt.usf.edu) bdixon@stpt.usf.edu
 E-mail: [Julie Earls](mailto:jearls@mail.usf.edu) jearls@mail.usf.edu