

## Self-Paced Workshop: Beginner's GIS II

### Overview

This course covers fundamental GIS concepts as well as how to query a GIS database, manipulate tabular data, edit spatial and attribute data, and present data clearly and efficiently using maps and charts.

Participants will learn how to use ArcGIS 9.2 including: personal geodatabases, working with raster data, crime density mapping and census data applications.

This self-paced course is for those who are new to ArcGIS and new GIS in general. This course will provide hands-on experience working with address matching/geocoding.

### Self-Paced Workshop

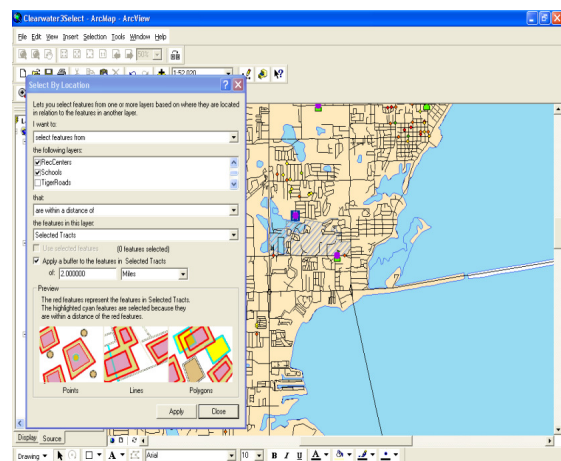
This is a **self-paced** course, therefore the student is responsible for taking full advantage of the materials they will be sent (CD of data and PDF of Workbook). If a Certificate of Completion is desired, the student will be required to submit \*.jpgs of certain exercises in a timely manner to our staff as proof of progress. Knowledgeable assistance is available via email ([fbradley@mail.usf.edu](mailto:fbradley@mail.usf.edu)) or phone (727) 873-4863 (Fred Bradley). There is no lecture for this workshop and no meetings; everything is on your own using the materials provided.

### Prerequisites and Recommendations

Participants should know how to use MS Windows software. This course provides the fundamental ArcGIS knowledge and experience needed to enroll in *Intermediate GIS workshop*.

### Goals

- Display feature and tabular data
- Work with georeferenced spatial data
- Query features using logical expressions
- Find features using spatial relationships
- Edit spatial and attribute data
- Associate tables with joins and relates



## Topics Covered

- Creating Personal Geodatabase
  - Creating Feature Classes
  - Creating Fields and Domains to Geodatabase.
- Raster Reclassification
  - Covert vector to raster
  - Reclassification of data
  - Reclassification using remap table
  - Reclassification to a common scale
- Crime Mapping
  - Crime Mapping I: Estimate Density for Crimes.
  - Crime Mapping II: Estimate Density Using Attributes.
- Census Geography
  - Census Exercise: Find Sites for A Potential Youth Center

<i>What Is Unique About Self-Paced Workshops?</i>	
<b>Instructor-Led Workshop</b>	<b>Self-Paced Workshop</b>
On 9am-4pm schedule	On your schedule
On-site (USF St. Petersburg)	At your location of choice
Instructor available in class	Assistance available via email/phone
Certificate of Completion at end of course	Certificate of Completion at end of course upon submission of *.jpgs
Use lab computers with software and data pre-installed	Install data on your computer and 180-day trial version of ArcGIS (with extensions)

## Contact Us

Dr. Barnali Dixon / Julie Earls  
 College of Arts and Sciences  
 140 7th Ave. South  
 (Geo-Spatial Analytics Lab -PNM 103)  
 University of South Florida St. Petersburg  
 St. Petersburg, FL 33701  
 Phone (727) 873-4025  
 E-mail: [Barnali Dixon](mailto:bdixon@stpt.usf.edu) bdixon@stpt.usf.edu  
 E-mail: [Julie Earls](mailto:jearls@mail.usf.edu) jearls@mail.usf.edu