

# Self-Paced Workshop: Beginner's GIS I & II

## Overview

This course covers fundamental GIS concepts as well as how to query a GIS database, manipulate tabular data, edit spatial and attribute data, and present data clearly and efficiently using maps and charts.

Participants will learn how to use ArcGIS 9.2 including: personal geodatabases, working with raster data, crime density mapping and census data applications.

This self-paced course is for those who are new to ArcGIS and new GIS in general. This course will provide hands-on experience working with address matching/geocoding.

## Self-Paced Workshop

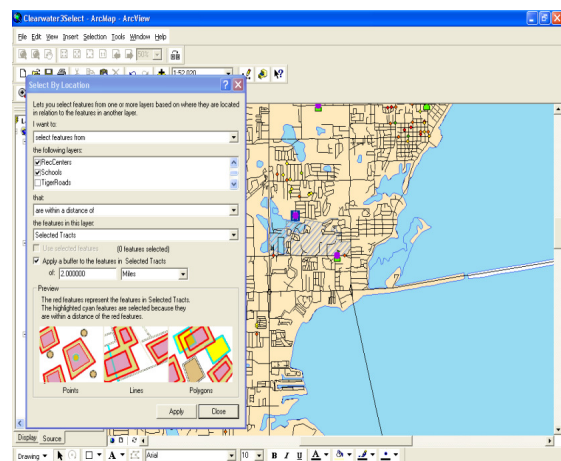
This is a **self-paced** course, therefore the student is responsible for taking full advantage of the materials they will be sent (CD of data and PDF of Workbook). If a Certificate of Completion is desired, the student will be required to submit \*.jpgs of certain exercises in a timely manner to our staff as proof of progress. Knowledgeable assistance is available via email ([fbradley@mail.usf.edu](mailto:fbradley@mail.usf.edu)) or phone (727) 873-4863 (Fred Bradley). There is no lecture for this workshop and no meetings; everything is on your own using the materials provided.

## Prerequisites and Recommendations

Participants should know how to use MS Windows software. This course provides the fundamental ArcGIS knowledge and experience needed to enroll in *Intermediate GIS workshop*.

## Goals

- Display feature and tabular data
- Work with georeferenced spatial data
- Query features using logical expressions
- Find features using spatial relationships
- Edit spatial and attribute data
- Associate tables with joins and relates
- Produce maps, reports, and graphs



**Topics Covered**

**Getting Started with ArcGIS Desktop v.9**

- Introduction to ArcMap, ArcToolbox, ArcCatalog.
- Manipulating Display Parameters in ArcMap

**Analyzing Spatial Data**

- Querying Data in ArcMap.
- Preparing Data for Analysis.
- Analyzing Spatial Data

**Map Making and Printing Maps Using ArcGIS**

- Map Making with Template
- Map Making without Template and Printing Maps

**Geocoding**

- How to create an Address Locator Service.
- How to Match Addresses.
- How to Rematch Unmatched Addresses.
- Add x,y data points and GPS points

**Creating Personal Geodatabase**

- Creating Personal Geodatabase
- Creating Feature Classes.
- Creating Fields and Domains to Geodatabase.

**Raster Reclassification**

- Covert vector to raster
- Reclassification of data
- Reclassification using remap table
- Reclassification to a common scale

**Crime Mapping**

- Crime Mapping I: Estimate Density for Crimes.
- Crime Mapping II: Estimate Density Using Attributes.

**Census Geography**

- Census Exercise: Find Sites for A Potential Youth Center.

<i>What Is Unique About Self-Paced Workshops?</i>	
<b>Instructor-Led Workshop</b>	<b>Self-Paced Workshop</b>
On 9am-4pm schedule	On your schedule
On-site (USF St. Petersburg)	At your location of choice
Instructor available in class	Assistance available via email/phone
Certificate of Completion at end of course	Certificate of Completion at end of course upon submission of *.jpgs
Use lab computers with software and data pre-installed	Install data on your computer and 180-day trial version of ArcGIS (with extensions)

**Contact Us**

Dr. Barnali Dixon / Julie Earls  
 140 7th Ave. South  
 University of South Florida St. Petersburg  
 (Geo-Spatial Analytics Lab -PNM 103)

St. Petersburg, FL 33701  
 Phone (727) 873-4025  
 E-mail: [Barnali Dixon](mailto:bdixon@stpt.usf.edu) bdixon@stpt.usf.edu  
 E-mail: [Julie Earls](mailto:jearls@mail.usf.edu) jearls@mail.usf.edu