

Self-Paced Workshop: Fishery Applications of GIS I

Course Topics

Fish Density Mapping, Biomass, Species Distribution, Suitable Location for Marine protection Zone, Mapping/Modeling CPU, Benthic Habitat Modeler, Correlation with Environmental Variables, Interpolating Point Data & more!!

Self-Paced Workshop

This is a **self-paced** course, therefore the student is responsible for taking full advantage of the materials they will be sent (CD of data and PDF of Workbook). If a Certificate of Completion is desired, the student will be required to submit *.jpgs of certain exercises in a timely manner to our staff as proof of progress. Knowledgeable assistance is available via email (fbradley@mail.usf.edu) or phone (727) 873-4863 (Fred Bradley). There is no lecture for this workshop and no meetings; everything is on your own using the materials provided.

TOPICS COVERED

Introduction to ArcMap, ArcToolbox, and ArcCatalog

- Introduction to Arc Catalog
- Introduction to Viewing Data in ArcMap
- Using ArcToolbox
- Introduction to GIS Exercise

Manipulating Display Parameters in ArcMap

- Changing Simple Feature Symbology
- Labeling Features and Adding Text to Features
- Changing a Features Symbology Using Categorical Attributes
- Changing Raster Symbology
- Displaying Quantitative Data

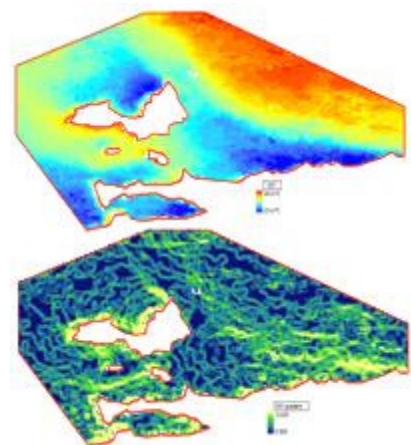
Map Making and Printing Maps Using ArcGIS

- Use a Map Template to Create a Map
- Creating Maps without Using a Template

Analyzing & Reporting Spatial Data

Querying and Preparing Data in ArcMap

- Selecting Feature by Attribute
- Selecting Features by Location
- Clipping Features
- Projecting and Defining the Coordinate System or Spatial Reference



Advanced Spatial Analysis

Suitable Location for Marine Protection Area

- Dissolving Features
- Creating Graphs
- Exporting Data
- Buffering Features
- Overlaying Layers

Correlation with Environmental Variables

- Creation of Sea Surface Temperature Gradient
- Fish Abundance Mapping
- Zonal Statistics
- Integration in Excel for Statistical Analysis

<i>What Is Unique About Self-Paced Workshops?</i>	
Instructor-Led Workshop	Self-Paced Workshop
On 9am-4pm schedule	On your schedule
On-site (USF St. Petersburg)	At your location of choice
Instructor available in class	Assistance available via email/phone
Certificate of Completion at end of course	Certificate of Completion at end of course upon submission of *.jpgs
Use lab computers with software and data pre-installed	Install data on your computer and 180-day trial version of ArcGIS (with extensions)

Contact Us

Dr. Barnali Dixon / Julie Earls
140 7th Ave. South
(Geo-Spatial Analytics Lab -PNM 103)
University of South Florida St. Petersburg
St. Petersburg, FL 33701
Phone (727) 873-4025
E-mail: [Barnali Dixon](mailto:bdixon@stpt.usf.edu) bdixon@stpt.usf.edu
E-mail: [Julie Earls](mailto:jearls@mail.usf.edu) jearls@mail.usf.edu