

## 2-Day Workshop: Beginners GIS

### Overview

This course covers fundamental GIS concepts as well as how to query a GIS database, manipulate tabular data, edit spatial and attribute data, and present data clearly and efficiently using maps and charts.

Participants will learn how to use ArcGIS including: ArcMap™, ArcCatalog™, and ArcToolbox™ and explore how these applications work together to provide a complete GIS solution.

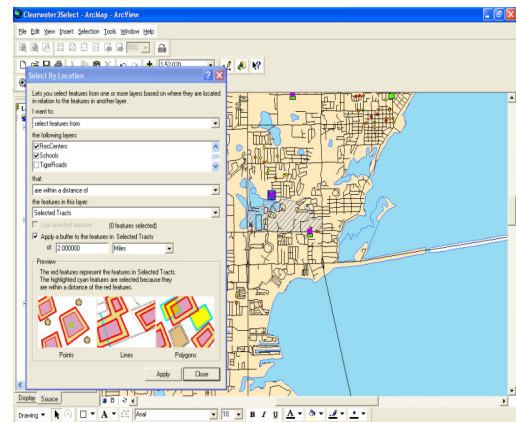
This 2-day course is for those who are new to ArcGIS and new GIS in general. This course will introduce basics of GIS on Day 1 followed by Day 2 hands-on experience working with census data, crime data and address matching/geocoding.

### Prerequisites and Recommendations

Participants should know how to use MS windows software. This course provides the fundamental ArcGIS knowledge and experience needed to enroll in *Intermediate GIS workshop*

### Goals

- Display feature and tabular data
- Work with georeferenced spatial data
- Query features using logical expressions
- Find features using spatial relationships
- Edit spatial and attribute data
- Associate tables with joins and relates
- Produce maps, reports, and graphs



### Topics Covered

- ArcGIS overview: Capabilities and applications; Interacting with the interface; Basic display
- Spatial data concepts: Representing spatial data and descriptive information
- ArcGIS data model: Geodatabases; Shapefiles; Coverages; Feature types; Attributes
- GIS software: Components; Functions; Applications
- Spatial coordinate systems and map projections: Georeferencing data;
- What map projections are; How ArcMap works with map projections
- Querying data: Selecting and identifying features; Creating reports and graphs
- Map displays: Creating; Symbolizing; Scaling; Adding map elements

- Crime Mapping
- Census data mapping and analysis
- Geocoding and address matching

## Contact Us

Dr. Barnali Dixon / Julie Earls  
College of Arts and Sciences  
140 7th Ave. South -DAV 210  
(Geospatial Analytics Lab -PNM 103)  
University of South Florida St. Petersburg  
St. Petersburg, FL 33701.  
Phone (727) 873-4025  
E-mail: [Barnali Dixon](mailto:bdixon@stpt.usf.edu) bdixon@stpt.usf.edu  
E-mail: [Julie Earls](mailto:jearls@mail.usf.edu) jearls@mail.usf.edu

