

1-Day Workshop: GIS for Emergency Management and Response Personnel

Overview

This course covers fundamental GIS concepts as well as how to query a GIS database, manipulate tabular data, edit spatial and attribute data, and present data clearly and efficiently using maps and charts.

Participants will learn how to use ArcGIS including: ArcMap™, ArcCatalog™, and ArcToolbox™ and explore how these applications work together to provide a complete GIS solution.

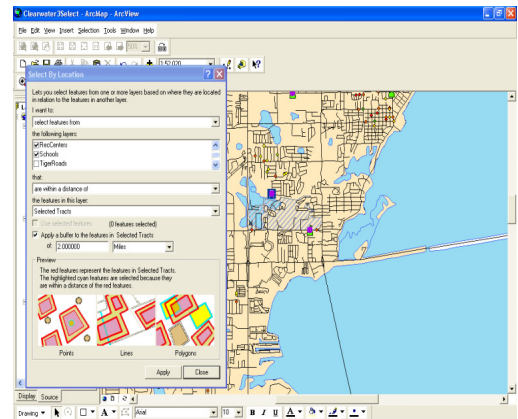
This 1-day course is for those who are new to ArcGIS and new GIS in general. This course will introduce basics of GIS followed by hands-on experience working with census data, crime data and address matching/geocoding.

Prerequisites and Recommendations

Participants should know how to use MS windows software and/or has IT background. This course provides the fundamental ArcGIS knowledge and experience needed to enroll in *Intermediate GIS workshop*

Goals

- Learn how GIS is used for emergency response
- Display map features (points, lines, polygons)
- Work with tabular data (excel and dbase files)
- Address matching
- Geocoding
- Zip code mapping
- Adding GPS data to a map
- Produce maps, reports, and graphs



Topics Covered

- ArcGIS overview: Capabilities and applications; Interacting with the interface; Basic display
- Spatial data concepts: Representing spatial data and descriptive information
- ArcGIS data model: Geodatabases; Shapefiles; Coverages; Feature types; Attributes
- GIS software: Components; Functions; Applications
- Spatial coordinate systems and map projections: Georeferencing data;
- What map projections are; How ArcMap works with map projections
- Querying data: Selecting and identifying features; Creating reports and graphs

- Map displays: Creating; Symbolizing; Scaling; Adding map elements
- Geocoding and address matching

Contact Us

Dr. Barnali Dixon / Julie Earls
College of Arts and Sciences
140 7th Ave. South -DAV 210
(Geospatial Analytics Lab -PNM 103)
University of South Florida St. Petersburg
St. Petersburg, FL 33701.
Phone (727) 873-4025
E-mail: [Barnali Dixon](mailto:bdixon@stpt.usf.edu) bdixon@stpt.usf.edu
E-mail: [Julie Earls](mailto:jearls@mail.usf.edu) jearls@mail.usf.edu

